

An Affiliate of the American Orchid Society

FORT LAUDERDALE ORCHID SOCIETY

N • E • W • S • L • E • T • T • E • R

December, 2009

On Turning War Memorial Into An Orchid Fantasy

We all worked hard last year to help get our show on the road again after the WOC, but we can't lose our momentum. Be sure you go to the volunteer page at the end of this news letter. There are 205 shifts to be filled!

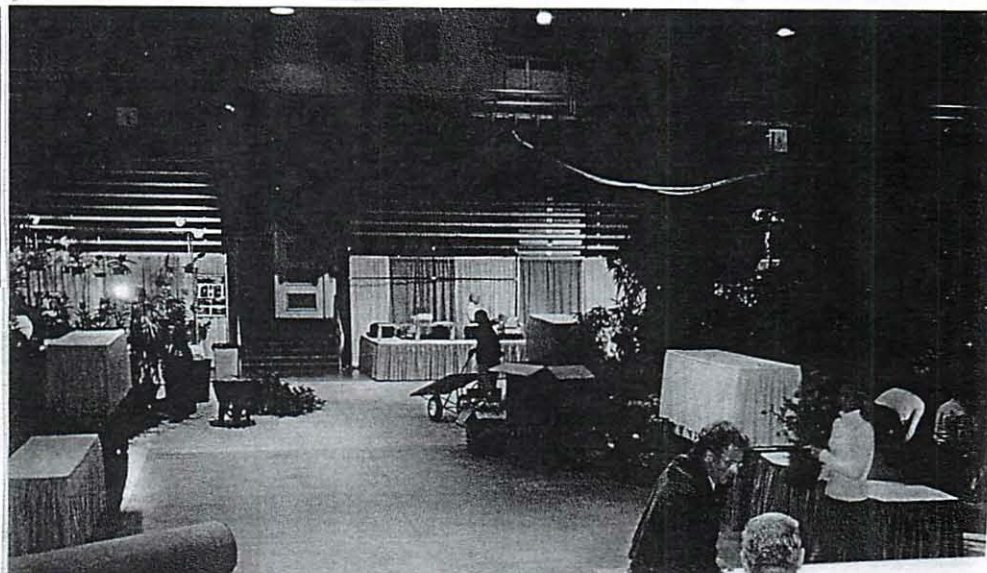
Now is the time to acknowledge some of those who will or have made above-and-beyond contributions.

Show Chair, **Chris Crepage**, has worked on the show since July. There are many hours needed to arrange the documentations and invitations needed to get our show on the road. It cost \$48,463 to produce the show last year, so the responsibility is huge.

Marian Huber drew our big and beautiful show poster and **Ray Ratliff** drew the little advertising poster that is being snatched up rapidly at several public places and shows. **Barbara Ansley** again found and purchased our trophies and has been busy distributing Ray's little posters.

Ken Slump is our chief judge, and he has updated the show schedule, invited the judges to attend, and will handle a ton of paper work after the show. **Dave Levine** has a big job handling all those presale tickets and numbers. Money is coming in well on the tickets. We all need to copy **Peggy Smith** who has turned in \$200 already. **Nora Dyke** and **Marian Huber** will again produce their signature judges' lunch.

Marc Burchette will register the individual plants on Wednesday, January 13th from 3-8:00 PM. **Others will be acknowledged in the February issue.** Copies of the January issue are given to possible new members at the show and that issue will again be slanted to gaining membership.



On This Good Season

Of course this is the time to extend President Joan Connors' and the FLOS Boards' wishes to each member for another year of good health, blooming orchids, and for extending the friendships that are so easily developed between orchid lovers.

It is also the right time to thank all for their contributions to the society. It is a contribution to attend meetings and make our speakers feel that their time is well spent. It is a contribution to support the show as you can, and it is a contribution to make other members know how much their membership and friendship means.

Where To Mail Your Money

Dave Levine (Pre-sale show tickets) 2964 NW 67th Court, Ft. Lauderdale 33309. (It will be too late to get a party ticket if you bring money to January meeting.)

Marian Huber (Holiday party) 3050 NE 9th Terrace Pompano Beach 33064

Bob Henley (Membership dues 2010) See front of newsletter.

Please write separate checks for tickets, party, & dues

Review November 9th Program By Terry Glancy from Pine Ridge

Terry began his program by telling us about the state of the art culture at Pine Ridge. I won't review the details of his mix since some of his components are not readily available. If you grow inside and use bark in a mix wash it 3 times and discard any bark that sinks in water, since it will not last a year. One of the things that Terry uses is a water holding polymer called Agro-Diamonds which we can Google and find out about ordering. It has a Potassium component which is better than the unhealthy for plants, Sodium, component found in most water holding polymers. Terry also mentioned that ground up tire mulch was one of his additions for the Sulfur it provides. (*Sulfur is a component in chlorophyll.*)

Terry cautioned that coco chips were not used by some growers because it tends to release too much held fertilizer after a year or so. Cleanliness was a bottom line in the Pine Ridge culture where it has been 14 years since a fungicide or insecticide has been used!

The specific caution for winter resting *Catasetums* was not to begin water after new shoot growth appears but to wait for new root growth. Watering too soon is a major cause of death in these orchids. The last thing I remember about culture according to Terry is that **an unhealthy plant should almost always be discarded!**

Did you go to www.pineridgeorchids.com before the meeting? If not go there as a review. For one thing you will see that the *Catasetinae* section of orchids includes the following genera: *Catasetum*, *Closesia*, *Cynoches*, *Dressleria*, and *Mormodes*. Hybrid grexes include *Catamodes*, *Catasellia*, *Catawesia*, *Clomophyllum*, *Cloughara*, *Clowestum*, *Cyclodes*, *Cynodes*, *Cyceellia*, *Fredclarkara*, *Monnierara*, *Mormodia*, *Mormosella* and there were many more on the screen that Terry showed us.

Terry feels that the short comings for pure *Catasetums* is the production of just a few short lived flowers that shoot pollen when moved. *Mormodes* have smaller flowers but have more flowers and they last for 4-6 weeks. Crosses between the two result in many medium sized flowers that last for weeks.

During the question period we got 3 good hints: 1/ Lava rock cuts roots, avoid it. 2/ You can water Vandaceous orchids less if you take them out of baskets and put the roots in common, one hole in the bottom, clay pots. Surround the roots with Styrofoam peanuts and top-dress the pot with charcoal to keep the peanuts from blowing away. 3/ Old backbulbs of *Catasetinae* can be attached to palm trees and may produce new plants which will thrive there.

Thank you Terry and Barbara, we appreciate your being with us, and look forward to seeing you on the spring ramble. D.H.

November Ribbon Judging Results

Marc Burchett /blue/ *Cyc. warscewiczii* x *Morm. lawrencenna*

Allen Cogar /blue/ *Vanda sandariana*

Paul Gartner /red/ *Vascostylis Viboon Velvet* 'Puffy Cloud'

Dr. Norma Jeanne Flack /blue/ *Zygo. Ryan's Moonlight*, /red/ *Onc. Mendehall* 'Hildos'

Bob Isaacs /blue/ *Onc. Sharry Baby* 'Sweet Fragrance', Otaara. Hidden Gold

Vicki Hallock /blue/ *Maxillaria uncatata* /red/ *Broughtonia negrilensis*

Tin Ly /blue/ Bl. Morning Glory 'H&R'

Dave Levine /blue/ Bulb. Elizabeth Ann Buckleberry, /red/ *Cyc. Jean E. Monnier* 'Marty' HCC/AOS

Allan and Jan Mink /blue/ Mtdm. Rosy Sunset, Den. Roy Tocunaga /red/ Paph. Vanguard

Sue and Bruce Muntz /red/ Blc. Mem. Vida Lee 'Limelight'

Ray Ratliff /blue/ *Taeniophyllum biccellaum*

Mercers Stowers /blue/ *Onc. papilio*

Shari Weidenhaum /blue/ Paph. Shireen

John Wrenth /red/ *Cirr. lipidum*

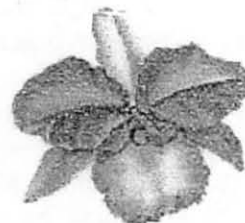
Thank you all for sharing your plants with us!

Thanking the Few 'Foodies'

Guess we are saving calories for the holidays, but these three kept us from starvation: Ginny Salus, Nora Dyke, and Joan Connors.

This is a good time to remind you to bring in treats on your birthday month and to thank Ginny Salus and Gigi Granger for being the refreshment committee this year.

Remember, there is no regular meeting in December.



Sad Times for One Show Vendor

Rafael Romero (Plantio La Orguidea) and his family are deeply saddened by the death of a 20 year old son in an auto accident. If you want to send a card, the address is on page 30 of the Membership Roster.

Plant Hormones 101

Phytochromes are probably the hormone you didn't study in school. There are two kinds (red and far-red), and they measure the amounts of these spectrum lights in the environment. In so doing they sense seasons for plants, telling them when to bloom, initiate growth and when to rest.

Auxin while the effects were noted by Darwin, later scientists figured it out. It is located, in seedlings at the tip of the stem, and causes stem elongation, and suppresses leaf and seed-pod (fruit) drop.

Cytokinins are found in root tips, they stimulate cell division and inhibit leaf drop. Synthetic cytokinins are used in tissue culture or making meristems

Gibberellins are produced in developing shoots in orchids and stimulate stem elongation and flowering.

Ethylene is produced in most plant cells, it is a gas which in orchids promotes leaf, flower, and seed pod dropping. We remove ripe fruit, loaded with ethylene, from orchid flowers or they will fade at the speed of light... almost.

Orchid biology 3-4 decades ago:

Bananas and B Vitamins

South Beach for orchid babies?

Withner (pp 130-33) in **The Orchids Scientific Studies** reported on the research of Ardeti and others who found that bananas increased differentiation and root growth in Catts and Phals. Bananas contain several plant hormones including cytokinins, auxins, gibnerellins, biotin and other vitamins, as well as mineral nutrients, and amino acids. Ardeti and others found that 5% pineapple juice added to the 15% banana worked even better.

Just for the fun of it, you might dose a puny orchid with a banana -pineapple smoothie. I would rinse the plant off in a day or so to control bacteria and fruit flies, but maybe the hormone shot would help?

The sixties and seventies were also decade to study the effects of B vitamins. B1 (thiamin), B6 (pyridoxin), B2 (riboflavin) and biotin were all found to have a positive effect on Catts..

The reference above is in our library, it was published by John Wiley and Sons, New York. Our copy is signed by Carl Withner the editor and writer of the chapter described above.

Orthene Thrip Control

Thrips turn *Vanda* buds brown and shriveled. They rim dark *Cattleya* petals with tiny white lines. To stop that mix ¼ teaspoon of powdered Orthene in 2 cups of water and put the mixture in a spray bottle. Spray buds as they emerge and keep spraying about every 3 days. You need to mix a fresh solution each time.

Don't Buy These Orchids

Baby plants: Unless you are an experienced grower avoid these. They do cost less but just as baby humans require much more care than adults so do baby orchids.

Beautiful blooms and puny foliage: You know this sermon: "I'm have to bloom, I'm going to die." Healthy leaves and roots, if you can take a peek, are the keys for selecting a plant that will be alive next year.

Cool and even intermediate growing plants: If you are growing outside don't even think cool growing and unless you know that a particular intermediate will thrive here avoid it.

Bare root plants in fall or early winter: You can save money by selecting bare roots in the spring when it is the season for roots to grow. If you buy these now they may die waiting for spring roots.

Plants from a mega depot/store: Ok, you can have two a year, but the new garden guy may only have experience as a tattoo artist, and how he has cared for the orchids may cause them to die.

Avoid species about which you know zero: Until you've done some reading you may not be able to keep some picky plants alive.

Don't try to be the first to own an exotic new orchid: Wait a year or three, this hot new baby will become common and sell for much less. *Phrag. besseae* sold for \$2,500. when it first came out, and the first *Phrag. kovachii* plants sold for \$1,000.

Buy most of your plants from reputable local growers who grow as you do: Plants from another climate will have to adapt to our climate and that will take time.

Unless you plan to attach orchids to a tree buy plants with clear name tags. A no-name will bloom and live forever, almost, but it is only valuable as a landscape enhancement.

Avoid plants with any evidence of disease or insect infestation: You knew that, but look carefully at all the leaves and don't skip the undersides.

The Rambler

The weather was mild and perfect on November 7th and the 57 rambles were about as perfect as people can be. Two rambles must have overslept, but the 59 passenger bus was still crowded and by afternoon the only available plant space was in the laps of the rambles.

Bob has us jot down what we spend at each place and the total this time was \$8,049.00. The low number put down was \$.20 at any one stop and the highest was \$230. The \$.20 was probably not the price of an orchid but was spent on an orchid supply.

Our first stop was **Living Color** which is a wholesale business in Homestead. They have an enormous facility where the healthy plants, the neatness, and the organization are impressive. We bought some great orchids and tempting other kinds of plants.

Stop two was **Carib Plants** which is always one of our very favorite stops. This stop ended the space in the bus under-carriage, and the purchases were mainly huge, in flower, *Cattleyas*.

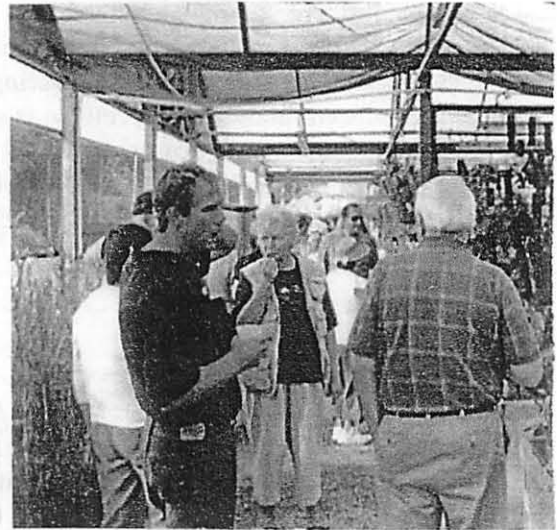
The third stop was **r.f. Orchids** which is our lunch and shop spot. The few rambles who were there for the first time gasped at the beauty of the richly colored *Vandas* and the beauty of the grounds. The Silk Floss tree was at its prime and got special attention.

Soroa Orchids was another great shopping space. Those of us who have rambled for decades remember when Phals dominated the benches and now the benches hold many genera but Catts take the most space.

Somebody has to be last, and no vendor prefers to have us spent out and exhausted, but the Cuestas were gracious and we managed to happily hold a good supply of **Quest** orchids on our laps.

I couldn't see what was going on in the back of the bus so I am about to get in trouble by leaving people out, but these rambles contributed trip-home wine or other necessities: Christine Marinella, Richard Knapp and Barbara Blauschild, Shari Weidenbaum, Paul Gartner, Ken Slump, John Wrench, and Michael Schaberl. I appreciated being able to assign some of the supplies or tasks to friends.

One last thought is regret that not all the people who wanted to ramble found a spot on the bus, but of course one moral is that those who paid up early got a seat. Bob and Lolita Shirks asked for the ramble date last summer and sent in a check for themselves and the three family members who came down from Jacksonville just to ramble. Even with the constraints in space, it was a wonderful day. Dot Henley



Rambles Listed Easy and Hard Alliances to Grow and Flower

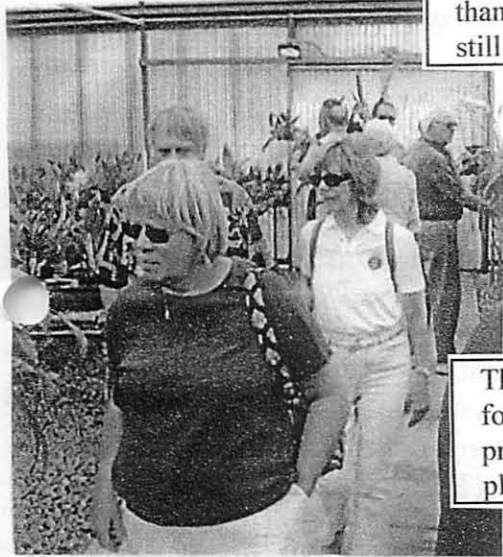
Alliance	Easiest	Hardest
<i>Cattleya</i>	20.3 %	21.1%
<i>Dendrobium</i>	26.1%	0%
<i>Encyclia or Epidendrum</i>	10.1%	7.9%
<i>Phalaenopsis</i>	18.8%	15.8%
<i>Phragmipedium</i>	1.4%	13.2%
<i>Paphiopedilum</i>	2.9%	31.6%
<i>Oncidiinae</i>	7.2%	0%
<i>Vandaceous</i>	17.4%	13.2%

Note: Almost all the rambles selected an easy-to-grow alliance, but only 67.9% of the rambles admitted to any hard-to-grow orchid group. The percentages shown here are rounded to the nearest tenth.

New growers might win if they select *Dendrobiums* or *Oncidiinae* as orchids to grow at first. There are as many microclimates and ways to grow orchids as there are members of our society. Somewhere out there is an orchid that will thrive under your care and growing conditions.



Jack Dodds your camera lies! We look much better than this. You are still appreciated .



Thanks ramblers for being so prompt and pleasant.



About Sow Bugs, aka Woodlice, Pill Bugs, or Isopod Crustaceans

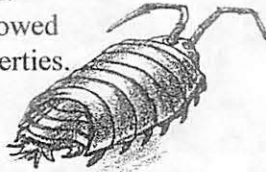
When I had a student who wanted to work with animals for a science project, he had little choice but to choose these animals. Their small size meant that 20 or so could live in a Mason jar on wet towels with a slice of potato for food. They were easy to obtain, died if they escaped in a dry house, didn't bite or carry disease, and they responded to chemical treatments and training.

Every now and then some gardening source tells you how to kill them, but don't. They eat decaying plant material or dead animal matter not live orchid roots. They help prepare compost for future use, and some museums use them to remove animal matter from delicate bones and shells that they wish to display. Now that you are sow bug smarter, know more tidbits.

Their blood is blue, females can produce young without a males, and they drink through posterior openings. They do not urinate, but expel liquid ammonia vapor. They produce more nitrogenous waste for their size than any other animal.

Once upon a time the Dutch swallowed whole ones for their diuretic properties.

Some of this information came from Lloyd, J and J. Mitchinson. 2007. *The Book of Animal Ignorance*. NY. Crown Publishing. Pp.219-221



Report on Carbon Nanotubes

Jack Dodds sent me an abstract published by the American Chemical Society which stated that Carbon nanotubes penetrated tomato seeds resulting in better germination and growth. The University of Arizona was the site of the research.

Ok, you're right, 'tiny tube' was my only clue to nanotube's identity. Google led me to some neat information to pass along. A nanometer is about one billionth of a meter and a cylindrical nanotube is about 1/50,000th the width of a human hair.

In 1990 a Japanese scientist accidentally discovered Carbon nanotubes which are the strongest material by weight known to man. Nanotubes are made by electricity being passed between Carbon arcs which causes the molecules to form a tiny lattice in the form of a cylinder. This new arrangement of molecules has an important future

It is expected that nanotubes will replace Silicon in micro-chips, will be used to strengthen many kinds of objects including airplanes, and may in time also be used to help in agriculture/horticulture.

Show Workers Please Save The Volunteer Page Which Follows

*When the show opens these are the
sift times:*

1st shift- 9:45am- 1:30 pm

2nd shift- 1:15pm- 5:00 pm

3rd shift- 4:45pm- 8:00 pm

You should arrive at War Memorial at 9:30, 1:00, or 4:30 to pull into the front circle, get a parking pass from the box office. After you park in the free lot return the pass to the box office.

On a GREAT Orchid Parent,

Laelia anceps

This species *Laelia* can survive great cold and full sun, if acclimated and it probably gives it's progeny a better ability to tolerate high light and cold. The best thing is that it blooms often and produces hybrids (Think Lc.) with flowers that tower above the leaves. *L. anceps* crosses have flowers that last longer than most pure *Cattleyas*.. My favorite *L. anceps* cross is Lc. Puppy Love. Earnest Hetherington made the cross using *C. Dubiosa* as the other parent in 1979 and it has become a 'common' plant world wide. Our plant usually produces about 20 perky pink, long lasting flowers. Larry Hill claims that our plant is so good because he raised it as a young plant and certainly a good start is important, but I would never admit that to Larry.

Lc. Puppy Love has been used in 48 crosses according to Wildcatt and of course *L. anceps* has been extensively used by hybridizers. D.H.

Some information from an article by Frank Fordyce, in the Jan,- Feb. issue of *Orchid Digest*. page 17

**Current Show Volunteers, Correct Errors Now With
Chairs. Also Call Chairs to Add Your Name to List**

Chris Crepage-

Show Chair 954-563-3548

Set up- Tuesday Jan. 12th

8:00 am, 20+ needed

1. Gary Pierce
- 2-3 Christopher and Mary Schul
4. Zoe Bejar
5. Dave Levine
6. Peggy Steptoe
7. Gus Valverde * 13+ needed

General help- Wed, Jan 13th

**8am until 11pm, 4-6 needed at
all times as set up progresses**

1. Connie Walker- earlier shift
2. Joan Stulginkas- earlier shift
3. Marc Burchette- later shift
4. Suzie Williams- later shift
*more needed

Tear down judges'

lunch-Thursday,

1-4pm 4-6 needed

* all needed

Tear down, when show

ends- Jan.17, from

6-8pm. 20+ needed

**(Hopefully all who took
the last sift will stay
and help.)**

Joan Connors, Michael Schaberl,
Chris Carney, Dot Henley and..

5. Tin Ly
6. Gary Sullivan
7. David Bogardus
- 8 John Wrench
- 9-10 Bruce and Sue Muntz
*15 more needed

**Leah Ostrander- Judging
Clerks**

8 am, Thurs. Jan. 14th

954-491-6619

1. Shari Weidenbaum
2. Joan Connors
3. Ginny Salus
4. Joan Stulginkas
5. Bob Isaacs
6. Jan Mink
7. Zoe Bejar *9 needed

Smiles in Green Vests

Hosts, Chris Carney

6 minimum each sift

954-771-7437

Friday, January 15th:

1st shift:

1. Saria Kaizad
2. Jack Dodds
3. Sandi Gardner
4. David Bogardus
5. Richard Allen *1 needed

2nd shift:

1. Ron McDonald *5 needed

3rd shift

*6 needed

Saturday, January 16th:

1st shift:

1. Lisa Connel
2. Michael Bryant *4 needed

2nd shift:

1. Elaine Jordan
- 2-3 Beverly & Ralph Chatterson
* 3 needed

3rd shift:

*6 needed

Sunday, January 17th:

1st shift:

1. Michael Bryant
2. Glen Kauffman *4 needed

2nd shift:

1. Norma Jeanne Flack
2. Cherly Magro
3. Rona Stubbman *3 needed

3rd shift:

1. Regina Banks
2. Doris Pearson
3. Ron MacDonald
4. Paul Gartner
- 5-6. Bruce and Sue Muntz
* 2-3 more needed, this is when
the show is the most crowded.
Again the end shift members on
Sunday are needed to man doors
and help as needed when the
show is torn down from 6pm -
8pm.

***Our show is big, friendly
and the BEST show in
the country. Why/how?***

***We all work together and
we even have fun.***

Michael Schaberl- Box Office

2-4 needed per sift. 954-764-1239

Friday, January 15th:

1st shift:

1. Tin Ly
2. Nora Dyke
3. Zo Bejar 4. Connie Walker
(One move to 2nd shift)

2nd shift: * 2 needed

3rd shift:

1. Bob Isaacs
2. Stan Tillotson none needed

Saturday, January 16th:

1st shift:

1. Chuck Nichols
2. Elaine Jordan * one needed

2nd shift:

1. Mercer Stowers
2. Linda Orsetti
3. Suzie Williams * none needed

3rd shift:

- 1 Laurie Klink * one needed

Sunday, January 17th :

1st shift :

1. Peggy Knight
2. Rich Akerman * none needed

2nd shift:

1. Mercer Stowers
2. Elaine Jordan
3. Saria Kaizad * none needed

3rd shift:

1. John Wrench * 2-3 needed

Joan Connors- FLOS Booth

1-2 needed per shift. 954-426-6618

Friday, January 15th:

1st shift:

2nd shift: 2 people needed for each sift

3rd shift

Saturday, January 16th

1st shift:

1&2 Rich & Carrie Ackerman *0 needed

2nd shift:

1. Bernie Langeluttig * 1- needed

3rd shift:

* 2 needed

Sunday, January 17th

* 6 needed, or 2 per shift

Dot Henley- Booth for AOS

**1 needed per shift, I need first shift
help Friday and Sunday. 954-772-4836**
These are firm spots.

Friday, 2nd shift- Shari Weidenbaum
Saturday 1st shift - Bonnie Bonneau
Saturday 2nd shift- Brian Boyle
Sunday 2nd shift- John Wrench
All 3rd shifts- Bob Henley



Sandi Jones
Tom Wells

BROWARD ORCHID SUPPLY, INC.
ORCHID SUPPLIES FOR ALL YOUR GROWING NEEDS
CUSTOM ORCHID RACKS & BENCHES
ORCHID REPOTTING & SITTING

2411 Garfield Street
Hollywood, FL 33020
954-925-2021 phone/fax
browardorchidsupply@comcast.net
www.browardorchidsupply.com

GREEN BARN ORCHID SUPPLIES

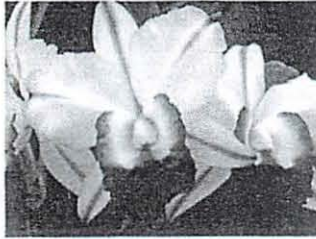
Everything you need to grow beautiful orchids



5185 Conklin Drive
Delray Beach, FL 33484
(561) 499-2810

website: www.greenbarnorchid.com

Co-Proprietors:
Lynn Lappin and Hyla Levine



**Carmela Orchids
Sheldon Takasaki**

P.O. Box 277
Hakalau, Hawaii 96710

Phone: (808) 963-6189
Fax: (808) 963-6125

Website: www.carmelaorchids.net
Email: carmelaorchids@hawaii.rr.com

Bonnet House Orchid Fair

900 North Birch Road

December 5 and 6 from 10AM-4PM

Buy orchids, exotic plants, supplies, garden art

*Admission \$5 -Fair and Grounds Pass
Admission \$15- Fair, Grounds and House
www.BonnetHouse.org*

Please read this early newsletter before you get too holiday busy.

Web Site: www.flos.org

Call these numbers: Sunshine (954) 491-1267
Newsletter (954) 772-4836

President.....Joan Connors
1st Vice President.....Wayne Musgrave
2nd Vice President.....Allen Cogar
Recording Secretary.....Gigi Granger
Corresponding Secretary..Zoe Bejar
Treasurer.....Bob Henley
Newsletter Editor.....Dot Henley

Directions: Use Oakland Park Blvd. from I-95.
Go East for 2.4 miles, go to the rear of the church
which is on the North side of Oakland Park Blvd.
Or take US-1 (Federal Hwy.) to Oakland Park
Blvd. And go West for 2 blocks.

Regular meetings: Second Monday of each month
Time: 7:30 P.M. Workshop, 8:20 P.M. Program
Place: Christ Lutheran Church Social Hall
1955 East Oakland Park Blvd.

P.O. Box 4677
Ft. Lauderdale, FL 33338

**FORT LAUDERDALE
ORCHID SOCIETY**

